

STAG E 2 SAMPLING

STAGE 2 SAMPLING

SAMPLE SIZE GOALS

Each research team is expected to obtain a quota of 250 respondents in each catchment area in all data collection waves.

In accordance with the sampling calendar, eligible men are sampled at venues during scheduled sampling events.



- For each sampling event, **a maximum of 24 interviews can be conducted.**

Twenty-four interviews assume that there are three interviewers and one clicker, with each interviewer being able to conduct a maximum of 8 interviews in each sampling event. This restriction is to ensure that no one event has a greater impact on the sample than any other event.

STAFFING

For each sampling event, as implied above, four CITY staff members are allowed: one to "click" those who look age and ethnicity eligible and up to three to screen and interview those determined to be eligible.



A maximum of 3 interviewers and one clicker can be at each sampling event. If desired an additional supervisory staff member may be present to oversee activities at a high volume event.

RECRUITMENT

When to intercept men to recruit them into the study. Eligible men are approached as they enter designated intercept areas or pass intercept lines as described in the Enumeration manual. All venues should have well defined and standardized intercept areas or lines. **The intercept line or area cannot be changed or moved during a sampling event unless there are extreme changes in the flow of foot traffic.** In these cases, it is up to the discretion of the field supervisor to change the intercept line or area.

Young men who appear 15 to 25 years of age and who enter an intercept area or who cross the intercept line are approached and asked to complete the CITY interview (if determined eligible through the screener). Interviewers use a standardized screener form to ascertain basic demographic and eligibility data (on website).

AREA BASED ENUMERATION

SETTING

- Suggested at venues where male street traffic is primarily MSM
- Area-based enumeration is feasible at venues where the overall volume of male foot traffic is low.
- Preferable at venues where men can enter from many directions.
- At parks, enumerators may have to define specific areas that can be adequately monitored and enumerated.
- At bars, dance clubs, and other venues with one entrance, a defined area in front of the entrance should be used.

METHOD

- Enumerators stand at one particular vantage point where the entire area may be observed.
- All males that appear to be both race/ethnicity eligible and 15-25 years of age who **enter or cross the designated area** from any direction are counted.

THE DESIGNATED AREA IS CALLED THE "INTERCEPT AREA" OR "ENUMERATION AREA"

VS.

LINE BASED ENUMERATION

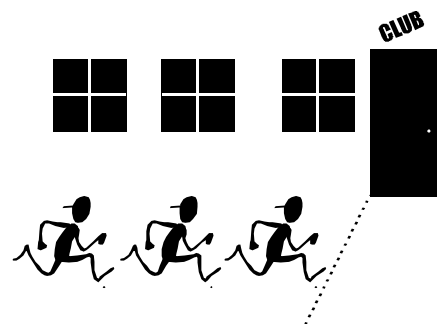
SETTING

- Suggested at gay-identified venues where the male street traffic is predominately men who have sex with women (MSW).
- Line-based enumeration should be done where the overall volume of male foot traffic is high; in these circumstances it is more reliable than area-based enumeration.

METHOD

- Only young men who appear to meet the age and race/ethnicity eligibility criteria are counted **as they cross an imaginary line** drawn near the venue entrance.
- The line does not have to be straight, nor need it be near the venue entrance. It should be placed in a location where most men going into the venue will cross it.

THE DESIGNATED LINE IS CALLED THE "INTERCEPT LINE" OR "ENUMERATION LINE"



SAMPLING METHOD

Intermittent consecutive sampling is performed. The steps for intercepting and recruiting men are as follows:

1. Only those men who are "clicked" by the clicker and who enter the area or cross the line are intercepted and invited to participate in the study, if determined eligible (from the screener).
2. If an eligible man refuses participation, then the next man "clicked" is intercepted.
3. Eligible men who agree to participate in CITY data collection are taken to a nearby area in sight of the field supervisor, where their confidentiality will not be compromised.
4. Consecutive recruitment occurs until all available interviewers are engaged in an interview at which time recruitment is suspended.
5. The clicker continues to click even when interviewers are not available. Interviewing resumes only when one of the interviewers become available.
6. Once interviewers are ready, the next man "clicked" who crosses the line or enters the area is intercepted and offered participation if eligible.



Consecutive recruitment begins and ends as interviewers become available or unavailable to interview. The clicker will continue to count men even when interviewers are not available. This gives us an estimate of the number of young men that are entering the venue during the sampling event (type 1 enumeration).

VOLUME BASED PROCEDURES FOR APPROACHING MEN FOR AN INTERVIEW

Regardless of the volume of the venue, once a man is clicked and he refuses to be interviewed, do not approach him again during that event.

- \$ **Men are clicked only on entry.**
- \$ **In high volume venues**, that is, venues that feature a large number of eligibles, it is not workable to approach anyone other than those who are entering.
- \$ **In low volume venues**, an interviewer will have the time and the opportunity to interview a man who was clicked but either the interviewer was not able to approach him before or the man himself gave an equivocal response.

An *equivocal response* is one that the interviewer believes is unclear or ambiguous.

IN LOW VOLUME VENUES, THERE ARE TWO POSSIBILITIES

1. Interviewers attempt to approach all men who are clicked.
2. Interviewers approach men who were previously clicked as they exit. Men should be approached in the order in which they exit.

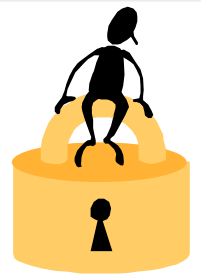
In cases of ambiguity, men should be approached in the order clicked in either of the above versions.

THE CLICKER ULTIMATELY MAKES THE FINAL DECISION ON WHO SHOULD BE APPROACHED.

ANONYMITY CONCERNS

Intercept areas or lines should be moved away from entrances of those venues where respondent anonymity may be compromised. Intercept areas or lines may be moved to other parts of the block or into adjacent parking lots as determined appropriate by the CITY field supervisor.

NOTE: The interview should take place within sight of the field supervisor whenever possible.



LOGISTIC CONCERNS

Conducting screening interviews during sampling events may be problematic. Complications that may arise include confusion among young men who are intercepted and who are not offered participation and the CITY incentive. CITY team supervisors should assess the situation and if necessary terminate screening and interviewing if survey operations or staff safety is jeopardized. However, screening and interviewing should not be terminated unless sufficient evidence exists that problems have occurred or will occur.

CITY sites must contact the CDC CITY Project Officer if particular sampling events have negative outcomes as a result of CITY survey activities. An adverse event form needs to be completed and returned to CDC when such an event occurs (on website).

SAMPLING AT SMALL GROUPS/WORKSHOPS ETC.

Sampling can be done at venues that have specific day/time periods and a definite number of regular participants during these periods. It is recommended that CITY staff contact the person/persons in charge and ask permission to conduct sampling (see Contacting Venue-Owner in Enumeration Manual).

Staff could arrange extra-time after the regularly scheduled event in order to administer the questionnaire. The regularly scheduled event could also be replaced with questionnaire administration for the one day. Staff should then sample ALL eligible and consenting participants who appear at the venue-specific day/time period.

TERMINATION OF DATA COLLECTION

CITY sites should continue to enroll eligible men until termination of the CITY survey period, August 31. In cases where sites reach their quota (250 men) before August 31, the site will continue to enroll men. Sites will only stop enrollment, if the site and CDC agree to do so.

MOVING TO AN ALTERNATIVE VENUE DURING STAGE 2 SAMPLING:

Unless the venue is closed or obviously unattended, the criteria for moving to an alternate venue are:

- \$ No completed interviews with eligible men after 30-45 minutes at a venue. If a sampling event does not produce any interviews within the 30-45 minutes, CITY teams may sample at the first alternate venue.
- **Moving to an alternate venue is an option, not mandatory.**
- CITY teams must attempt enrollment for at least 30 minutes before deciding to move to the second alternate (tertiary) venue, or 30 minutes at the alternate tertiary venue before terminating enrollment for the day. If the team believes that attendance will improve after 30 minutes of unsuccessful enrollment, they may stay at the primary venue. **It is at the field/interviewer supervisor's discretion to move to the alternative venue.**
- The criterion of 30- 45 minutes of unsuccessful enrollment is also applied at alternate sampling events.

CITY teams may also return to the primary venue provided the alternate venues have insufficient attendance. If at any time the venue closes or is unattended, the sampling team moves to the alternate venue. If the sampling team spends 1 hour at the first venue and moves, then only three hours are spent at the alternate venue.

Travel time from one venue to the other is not included.