

2008 Effective Teachers Seminar Series

Learners With Learning Problems

Presented by:

**Al Hesser, Ed.D., Director: Student Academic Assistance Services
Office of Medical Education**

**Susanna Parker, M.D., Associate Dean of Student Affairs
Medical School**

**Cheryl Silver, Ph.D., Professor, Rehabilitation Counseling
Southwestern Allied Health Sciences School**

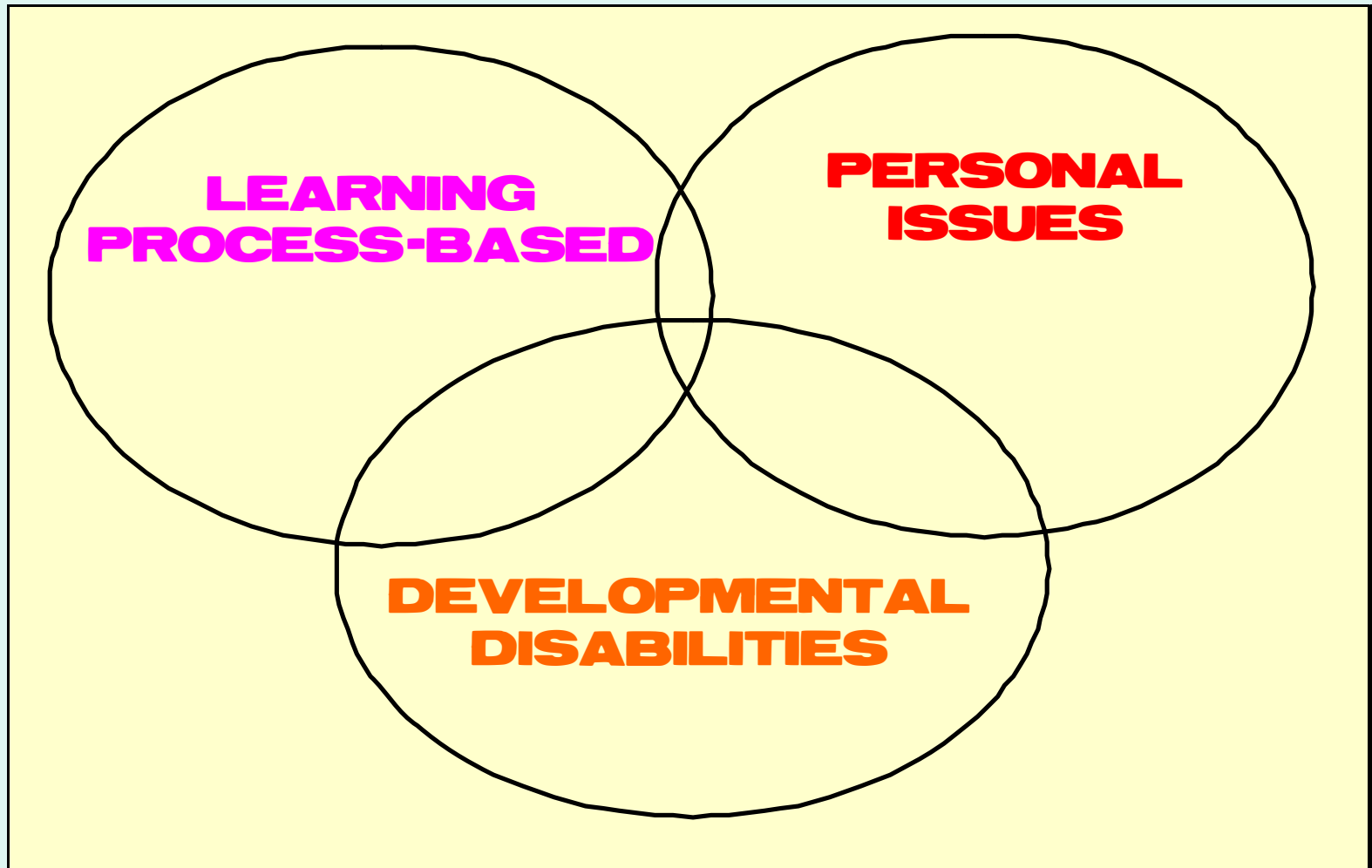
March 4, 2008

Learners With Learning Problems

Objectives: After today's seminar, participants should have a better awareness of:

- learning problems experienced by our students
- what a faculty member should do when concerned about a student learner
- resources available to students with learning problems

Learners With Learning Problems



Learners With Learning Problems

Learning problems experienced by students

- Learning Process-based
 - Learning & Study Skills Components
 - o **Strategic Learning Framework:** Learning & Study Skills Inventory (LASSI) (Weinstein and Palmer, 2002)
 - Student's Will
 - Student's Skill
 - Student's Self Regulation

Learners With Learning Problems

Learning problems experienced by students

- Learning Process-based
 - Strategic Learning Components
 - o **Student's Will**
 - Attitude
 - Motivation
 - Anxiety

Learners With Learning Problems

Learning problems experienced by students

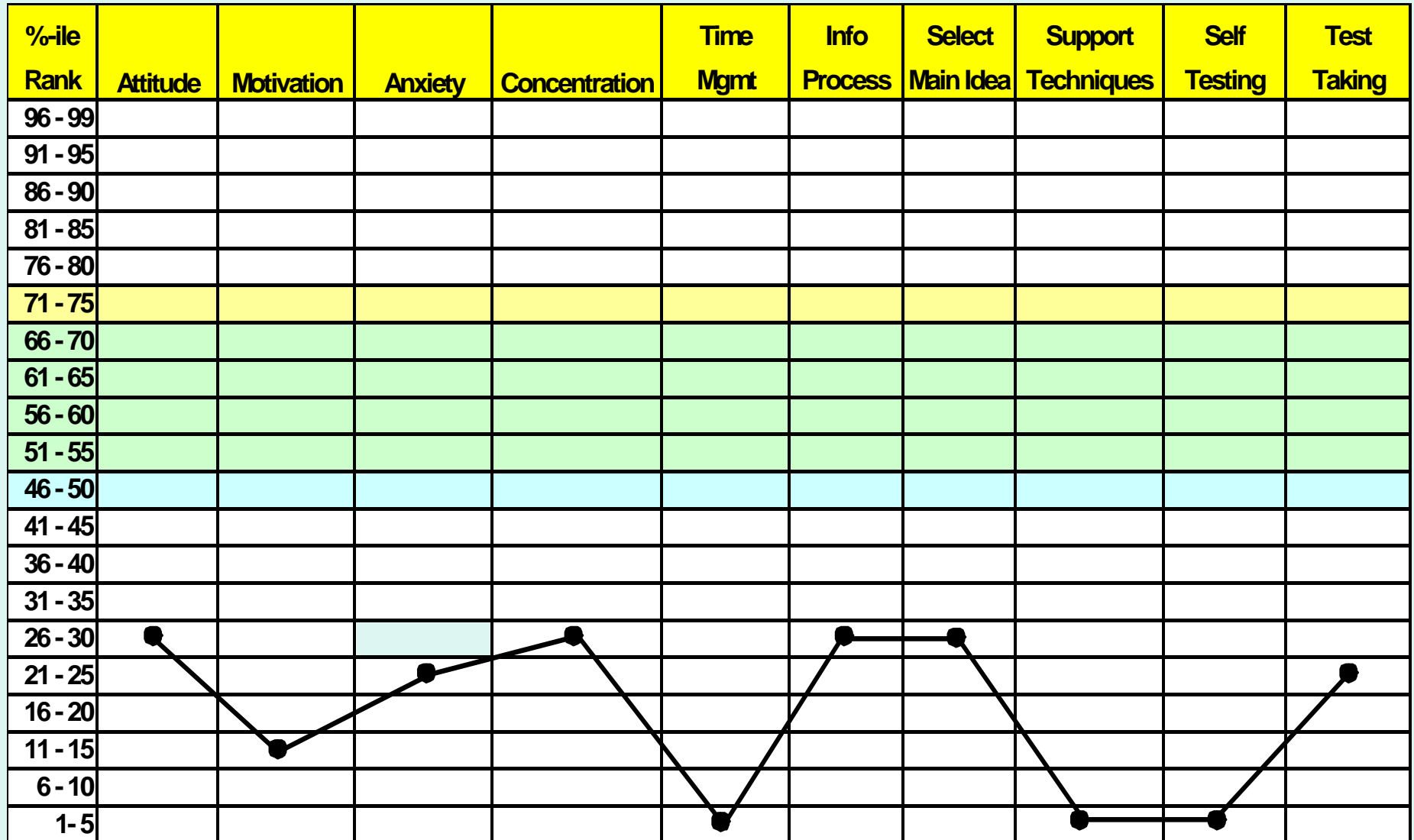
- Learning Process-based
 - Strategic Learning Components
 - o **Student's Skill**
 - Information Processing
 - Selecting Main Ideas
 - Test taking

Learners With Learning Problems

Learning problems experienced by students

- Learning Process-based
 - Strategic Learning Components
 - o **Student's Self Regulation**
 - Time Management
 - Concentration
 - Self Testing
 - Support Techniques

Learning and Study Skills Profile



Learners With Learning Problems

Learning problems experienced by students

- Personal Issues
 - **Common Psychiatric Disorders**
 - o Adjustment
 - o Mood
 - o Anxiety
 - o Substance abuse
 - o Psychotic
 - o Eating
 - o Personality

Learners With Learning Problems

Learning problems experienced by students

- Personal Issues
 - **Socio-Cultural Influences**
 - o Generation Y
 - o Challenges of Generation Y

Learners With Learning Problems

Learning problems experienced by students

- Personal Issues
 - Other
 - o Traumatic injuries
 - o General medical conditions

Learners With Learning Problems

- **Developmental Disabilities**

- **Learning Disabilities and ADHD**

- o Usually first diagnosed in childhood

- o When a child is bright, the disorder may be masked

- o Do not typically *begin* in adulthood, but may be *identified* in adulthood

Learners With Learning Problems

Developmental Disabilities

– Learning Disability

o **General concepts**

- ... a heterogeneous group of disorders manifested by significant difficulties in the acquisition and use of listening, speaking, reading, writing, reasoning, or mathematical skills
- failure to develop academic skills that are commensurate with age and ability level
- operationalized as a discrepancy between IQ and achievement scores

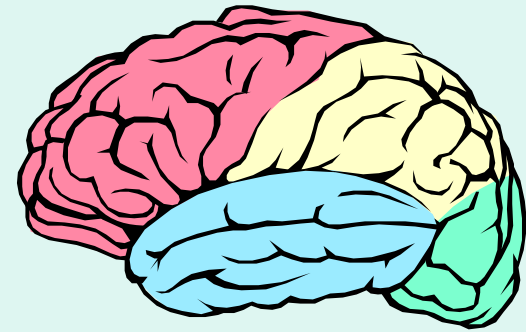
Learners With Learning Problems

- **Developmental Disabilities**

- Learning Disability

- o **Alternate Terms**

- Dyslexia
 - Spelling Dyspraxia
 - Dysgraphia
 - Dyscalculia



Learners With Learning Problems

- **Developmental Disabilities**

- Learning Disabilities

- **Reading disabilities in advanced students**

- Poor performance on timed multiple choice tests
 - Misunderstanding the questions
 - Confusion or difficulty reading uncommon terms
 - Needing to read and re-read
 - Reading takes longer than expected

Learners With Learning Problems

- **Developmental Disabilities**
 - Learning Disabilities
 - o More symptoms
 - **Oral language problems**
 - Misunderstanding instructions
 - Slow to “get it”
 - Poorly formed oral responses

Learners With Learning Problems

- **Developmental Disabilities**

- Learning Disabilities

- **Written language disabilities in advanced students**

- Poor spelling

- Difficulty expressing ideas in writing

- Slow writing speed

Learners With Learning Problems

- **Developmental Disabilities**

- Learning Disabilities

- **Math disabilities in advanced students**

- Careless mistakes
 - Number transposition
 - Calculation errors
 - Math reasoning difficulties

Learners With Learning Problems

- **Developmental Disabilities**

- Learning Disabilities

- o **Emotional issues to consider**

- What's wrong with me?
 - Eroding self confidence
 - Confusion, anxiety, depression
 - Keeping it hidden

Learners With Learning Problems

- **Developmental Disabilities**

- Attention Deficit Hyperactivity Disorder (ADHD)

- o **What is it?**

- Persistent pattern of inattention and/or hyperactivity-impulsivity
 - More frequent & severe than expected for age
 - Creates impairment in functioning

Learners With Learning Problems

- **Developmental Disabilities**

- Attention Deficit Hyperactivity Disorder (ADHD)

- o **Types**

- Predominantly inattentive

- Predominantly hyperactive/impulsive

- Combined

Learners With Learning Problems

- **Developmental Disabilities**

- Attention Deficit Hyperactivity Disorder (ADHD)

- **Symptoms in advanced students**

- Time management problems—including procrastination
 - Disorganization
 - Difficulty focusing or sustaining attention
 - Forgetfulness

Learners With Learning Problems

- **Developmental Disabilities**

- Attention Deficit Hyperactivity Disorder (ADHD)

- o **More symptoms**

- Tasks don't get finished

- Easily bored

- Irritable or impatient

- **Impulsive**

- Easily stressed out

- Restless

Learners With Learning Problems

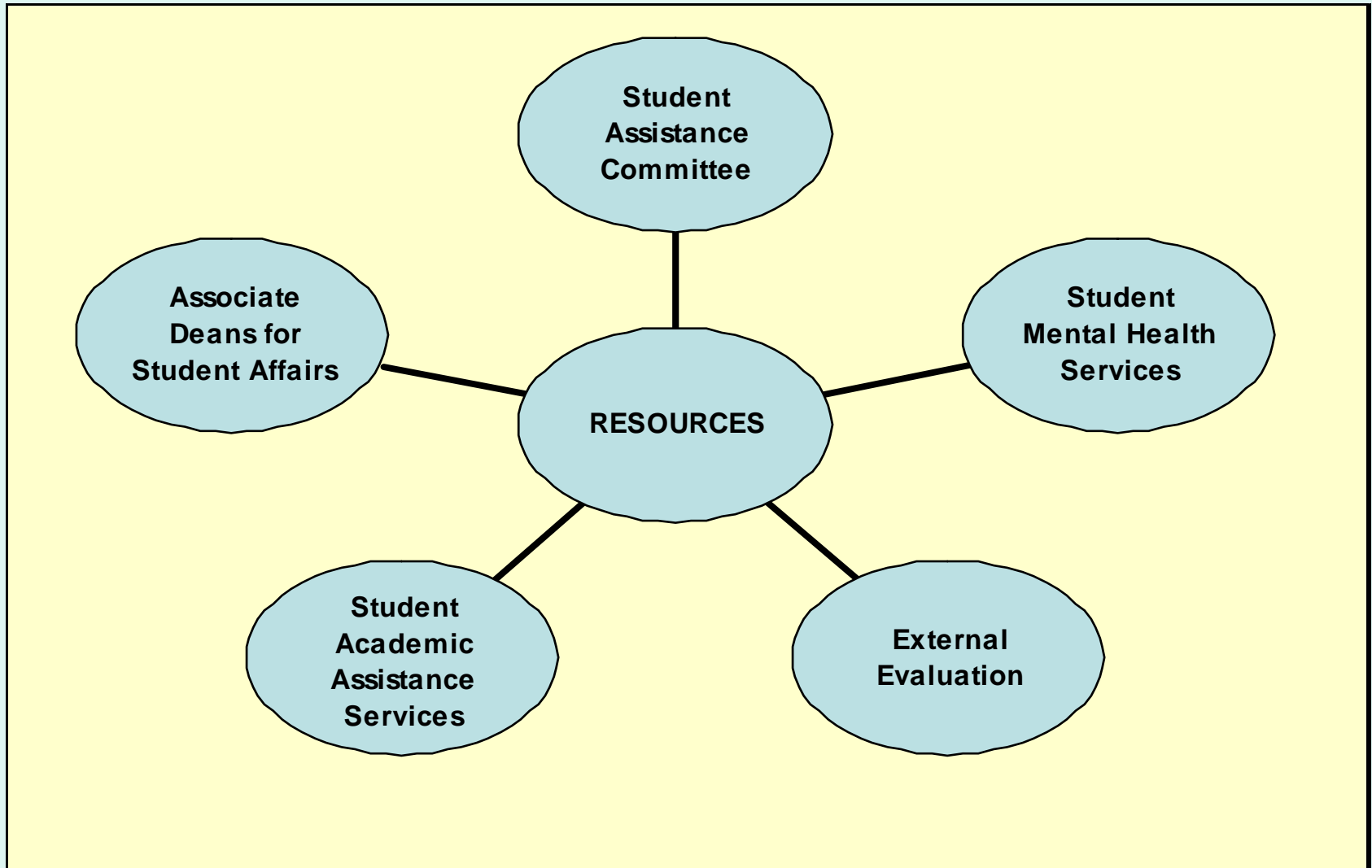
- **Developmental Disabilities**
 - **Issue for the advanced student**
 - o Not just a relative weakness
 - o Not just a problem in a high demand environment
 - o Not just having to work harder than others

Learners With Learning Problems

What faculty should do when concerned about a student

- Consult with faculty colleagues
 - Course/Clerkship Director consult with faculty & vice versa
- Consult with administrative faculty, e.g., Associate Dean(s) for Student Affairs or Director of OME: SAAS
- Consult with student
- Negotiate plan of action with student
- Continue to encourage and support student

Learners With Learning Problems



Learners With Learning Problems

Resources available for students with learning problems

Student Academic Assistance Services

- Academic Advisement and Counseling
- Learning Assessment and Screening

Learners With Learning Problems

Resources available for students with learning problems

- Learning Assessment and Screening
 - Learning and Study Skills: LASSI
 - Reading: Nelson-Denny Reading Test

Nelson-Denny Reading Test

% - ile Rank	Vocabulary	Comprehension	Total	Rate
99				
93-98				
87-92				
81-86				
75-80				
69-74				
66-68				
60-65				
54-59				
48-53	2		2	
42-47				
36-41		2		
30-35				
24-29				
18-23				
12-17				
6-11	1			
1-5		1	1	1

Nelson-Denny Reading Test

% - ile Rank	Vocabulary	Comprehension	Total	Rate
99				
93-98				
87-92				
81-86				
75-80				
69-74				
66-68				
60-65				
54-59				
48-53	2			
42-47				
36-41				
30-35				
24-29	1			
18-23		1	1	
12-17				
6-11				1
1-5				

Learners With Learning Problems

Resources available for students with learning problems

- Learning Assessment and Screening
 - Learning and Study Skills: Learning & Study Skills Inventory (LASSI)
 - Reading: Nelson-Denny Reading Test
 - Critical Thinking: Watson-Glaser Critical Thinking Appraisal
 - Stress: Holmes-Rahe Social Readjustment Scale
 - Learning Styles: Canfield's Learning Styles Inventory
 - Personality Type: Myers-Briggs Type Indicator

Learners With Learning Problems

Resources available for students with learning problems

- Student Academic Assistance Services
 - Academic Advisement and Counseling
 - Learning Assessment and Screening
 - Learning Skills Development

Learners With Learning Problems

Resources available for students with learning problems

- Learning Skills Development
 - Establishing Study System
 - Time Management
 - Note-taking
 - Information Condensing Techniques, e.g., charting
 - Memorization Techniques
 - Test Taking Strategies

Learners With Learning Problems

Resources available for students with learning problems

- Student Academic Assistance Services (cont'd)
 - Peer Tutoring
 - Support for Students with Disabilities
 - Stress Management Assistance
 - Communications Skills Development
 - USMLE: S1 Prep
 - Summer Academic Enrichment Programs
 - Referrals

Learners With Learning Problems

Resources available for students with learning problems

- Office of Associate Deans of Students Affairs
 - Personal/Academic Advising and Counseling
 - Administrative
 - o Leave of Absence
 - o Decelerated Curriculum
 - Referrals
 - o Advising
 - o Counseling
 - o Psychotherapy

Learners With Learning Problems

Resources available for students with learning problems

- Student Mental Health Services
 - Diagnostic Evaluation (Except Psycho-ed & Neuropsych Testing)
 - Brief Counseling/Psychotherapy (Individual & Couples)
 - Crisis Intervention
 - Medication Management
 - Other Referrals

Learners With Learning Problems

Resources available for students with learning problems

- Student Assistance Committee*

Thomas Lacour, M.D., Chair	(214) 648-4868
Carol Croft, M.D.	(214) 648 2992
Gerald Casenave, Ph.D.	(214) 648-1738
P. Eugene Jones, Ph.D. PA-C	(214) 648-1701
Carole Mendelson, Ph.D.	(214) 648-2944
Elysia Moschos, M.D.	(214) 648-4794
James Richardson, D.V.M., Ph.D.	(214) 648-4006
Arnold Rubenfield, M.D.	(214) 648-2432
Carlos Tirado, M.D., M.P.H.	(214) 648-6981
Chuck Whitten, M.D.	(214) 590-8755

* This committee may be accessed by contacting anyone of its members.

Learners With Learning Problems

Resources available for students with learning problems

- External Evaluation: Assessment & Diagnosis of LD/ADHD
 - Office of Associate Dean & OME maintain a list of independent psychologists
 - Student bears the burden of documentation
 - At student's own expense

Learners With Learning Problems

Resources available for students with learning problems

- External Evaluation: Assessment & Diagnosis of LD
 - Interview, history, & standardized testing
 - Assess IQ, cognitive processing, & academic skills
 - Diagnosis
 - discrepancy between IQ and achievement
 - identification of underlying processing deficits
 - history taken into account

Learners With Learning Problems

Resources available for students with learning problems

- External Evaluation: Assessment & Diagnosis of ADHD
 - Interview & history
 - May include standardized testing
 - Diagnosis
 - sufficient behavioral symptoms with sufficient degree of severity
 - history of symptoms in childhood.

Learners With Learning Problems

Resources available for students with learning problems

- Sample Accommodations
 - Change testing format
 - Special testing room
 - Modified exams
 - Extended time
 - Change teaching format
 - Tutoring

Learners With Learning Problems

Resources available for students with learning problems

- Sample Recommendations
 - Change study environment
 - Use study and time management strategies
 - Change information modalities
 - Stress management or counseling
 - Consider trial of medication

Learners With Learning Problems

Take Home Points

- Learning problems are multifaceted; encompassing process based, personal and developmental etiologies.
- When faculty are concerned about a student they should consult as appropriate, negotiate a plan with the student, and follow up with sustained encouragement and support.
- UTSW has a number of resources available to students with learning problems. Although confidential, these resources are integrated and easily accessed by students for evaluation and by faculty for guidance.